

# FLINDERS GREENWAY COMMUNITY ENGAGEMENT

## FLINDERS GREENWAY CONCEPT PLAN

The City of Marion, in partnership with Renewal SA and the Department for Planning, Transport and Infrastructure (DPTI), is co-funding and implementing a new Greenway in 2020/21.

### THE GREENWAY:

- will provide safe, high quality walking and cycling connections from Flinders Hub to, and within, the Tonsley Innovation District and wider community area
- aligns with the rail corridor, integrates with the new Tonsley Railway Station and runs from Alawoona Avenue south to Birch Crescent



Image is indicative.

This document draws the plans together in a downloadable PDF – to be used together with the Making Marion website to review and provide feedback on the proposed plans.

May 2020

RenewalSA



Government of South Australia  
Department of Planning,  
Transport and Infrastructure



## FLINDERS GREENWAY PLAN

The section of Flinders Greenway within the Tonsley Innovation District will integrate a shared use path with extensive landscaping and lighting, linking open spaces for recreation and places of respite. The design of the open space and Greenway will be in line with the vision for Tonsley as a high quality, durable, public realm that is inviting and provides a sense of vibrancy.

In response to community feedback from previous consultation, good quality path surfaces and lighting will feature throughout the Flinders Greenway to improve access, safety and visibility.

### KEY

- 1 Clovelly Park Station decommissioned. Future Greenway to continue north along rail corridor within Tonsley Village (PEET) development site
- 2 Pedestrian crossings at Alawoona Avenue
- 3 New Tonsley Station
- 4 Possible future pedestrian links between the Greenway and Tonsley Innovation District (subject to final development sites)
- 5 Pedestrian rail crossing
- 6 Future linear reserve incorporating wetlands
- 7 Future street with possible future connection to Birch Crescent
- 8 Small pocket park providing pedestrian connections to the Greenway, including seats and landscaping



Plan is indicative.

- 9 Birch Crescent streetscape renewal, including indented car parking, Greenway shared path, new street trees and water sensitive urban design
- 10 Pedestrian/ Cyclist underpass connecting Lynton Avenue and Birch Crescent
- 11 Stairs connecting to shared use path on bridge over Sturt Road
- 12 Ramp connecting to shared use path on bridge over Sturt Road
- 13 Plaza linking Greenway to Sturt Road, Lynton Avenue + Birch Crescent
- 14 Pedestrian/Cyclist path on bridge over Sturt Road





## BIRCH CRESCENT PLAN

The Birch Crescent streetscape will provide improved amenity, lighting, shared use path, indented car parking to improve vehicle movements and water sensitive urban design. Wayfinding and public art will be integrated in the project, enhancing the overall aesthetics and sense of place.

### KEY

- 1 Possible future connection to MAB Circuit
- 2 Pedestrian path connecting Birch Crescent to Greenway
- 3 Birch Crescent streetscape renewal, including indented car parking, Greenway shared path, new street trees and water sensitive urban design
- 4 New Greenway
- 5 Pedestrian/ Cyclist underpass connecting Lynton Avenue and Birch Crescent
- 6 Stairs connecting to shared use path on bridge over Sturt Road
- 7 Ramp connecting to shared use path on bridge over Sturt Road
- 8 Plaza linking Greenway to Sturt Road, Lynton Avenue + Birch Crescent



Plan is indicative.

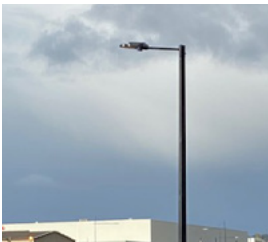
### INDICATIVE IMAGES



3M WIDE BITUMEN  
SEALED SHARED USE  
PATH



NEW STREET TREES  
AND PLANTING  
ADJACENT SHARED  
USE PATH



POLE TOP LIGHTING  
ALONG GREENWAY



BIRCH CRESCENT  
WATER SENSITIVE  
URBAN DESIGN



SIGNAGE +  
WAYFINDING /  
TECHNOLOGY



INTEGRATED PUBLIC ART  
OPPORTUNITIES ALONG  
GREENWAY, AT STATION  
AND POCKET PARK



VERGE AND RAIL  
CORRIDOR BUFFER  
PLANTING WITH  
NATIVE SPECIES



## FUTURE GREENWAY NORTH OF ALAWOONA



The future Greenway north of Alawoona Avenue will be developed by PEET Limited, as part of the 11 hectare Tonsley Village residential development within the broader Tonsley Innovation District.

Key design features of the Flinders Greenway south of Alawoona will flow on into the future Greenway to the north – seamlessly linking the two, both practically and aesthetically.

PEET will also introduce water-sensitive urban design features, provide further variety in the pedestrian/ cyclist shared path width, and integrate the Greenway landscaping with the landscaping and public areas planned for the new residential development adjacent to the Greenway.

Early, indicative concepts of the Greenway are included in the Tonsley Village masterplan fly-through video which can be viewed at: [peet.com.au/communities/adelaide-and-sa/tonsley/updates-and-offers/flythrough](https://peet.com.au/communities/adelaide-and-sa/tonsley/updates-and-offers/flythrough)

The Central Reserve and other open space, including the future Greenway, will be delivered in stages in line with the civil staging of Tonsley Village, with all works planned to be completed in 2025.



# FLINDERS GREENWAY COMMUNITY ENGAGEMENT

## PROVIDING FEEDBACK

To provide feedback on the Flinders Greenway Plan, visit the Making Marion website page

[\*\*www.makingmarion.com.au/flinders-greenway\*\*](http://www.makingmarion.com.au/flinders-greenway)

View the interactive plans and complete the survey between 18 May – 5 June 2020.

If you require further information or assistance please contact the City of Marion Engagement team on 08 8375 6600 or email [\*\*communityengagement@marion.sa.gov.au\*\*](mailto:communityengagement@marion.sa.gov.au)

## NEXT STEPS

Dates are indicative

- Greenway design completed July 2020
- Greenway construction put out to tender July/August 2020
- Greenway construction commences September 2020
- Greenway construction completed early 2021

## KEEPING INFORMED

To subscribe to be updated on progress with the Flinders Greenway email

[\*\*communityengagement@marion.sa.gov.au\*\*](mailto:communityengagement@marion.sa.gov.au)

RenewalSA



Government of South Australia  
Department of Planning,  
Transport and Infrastructure